

— WISH TOWN —  
**KLASSIC**

New Residential Community at Jaypee Greens, Noida

# MASTERPLAN OF WISH TOWN KLASSIC



The master plan could be subject to variations and modifications by Jaypee Greens or the competent authorities, statutory and otherwise

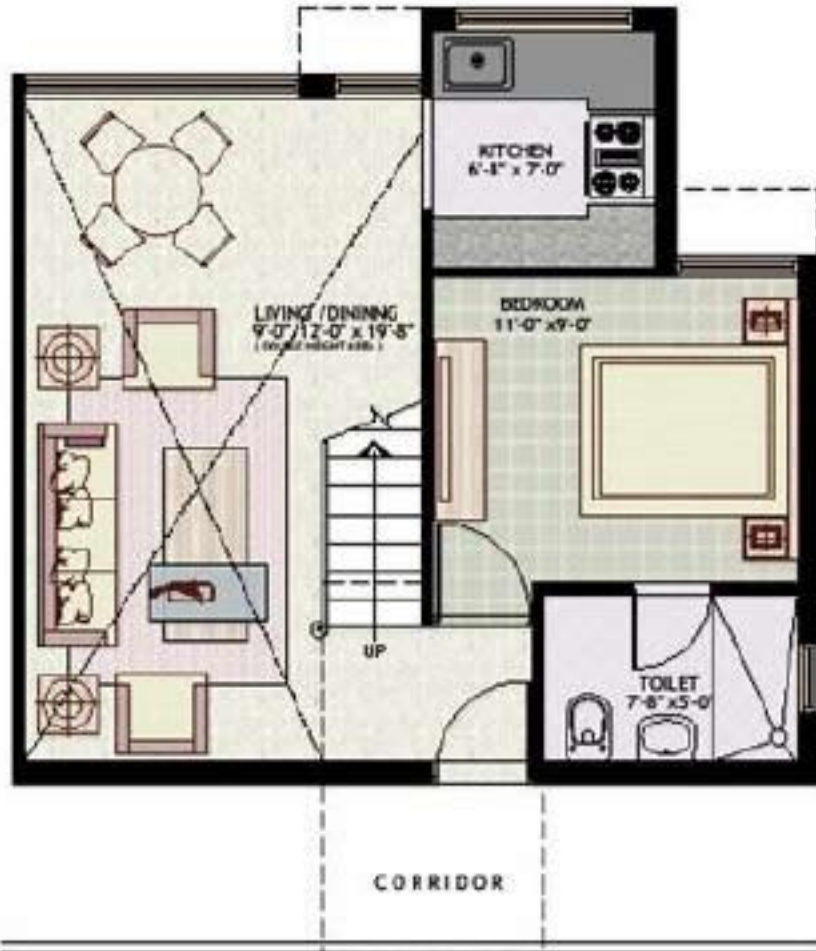
# CLUSTER PLAN- LOWER LEVEL



# CLUSTER PLAN-UPPER LEVEL



# FLOOR PLAN- 2 BHK APARTMENT



LOWER LEVEL PLAN



UPPER LEVEL PLAN

Total Super Area: 1045 sq. ft. (approx)

# FLOOR PLAN- 3 BHK APARTMENT



Total Super Area: 1400 sq. ft. (approx)

# FLOOR PLAN- 4 BHK APARTMENT



Total Super Area: 2250 sq. ft. (approx)

# FLOOR PLAN- 4 BHK APARTMENT

